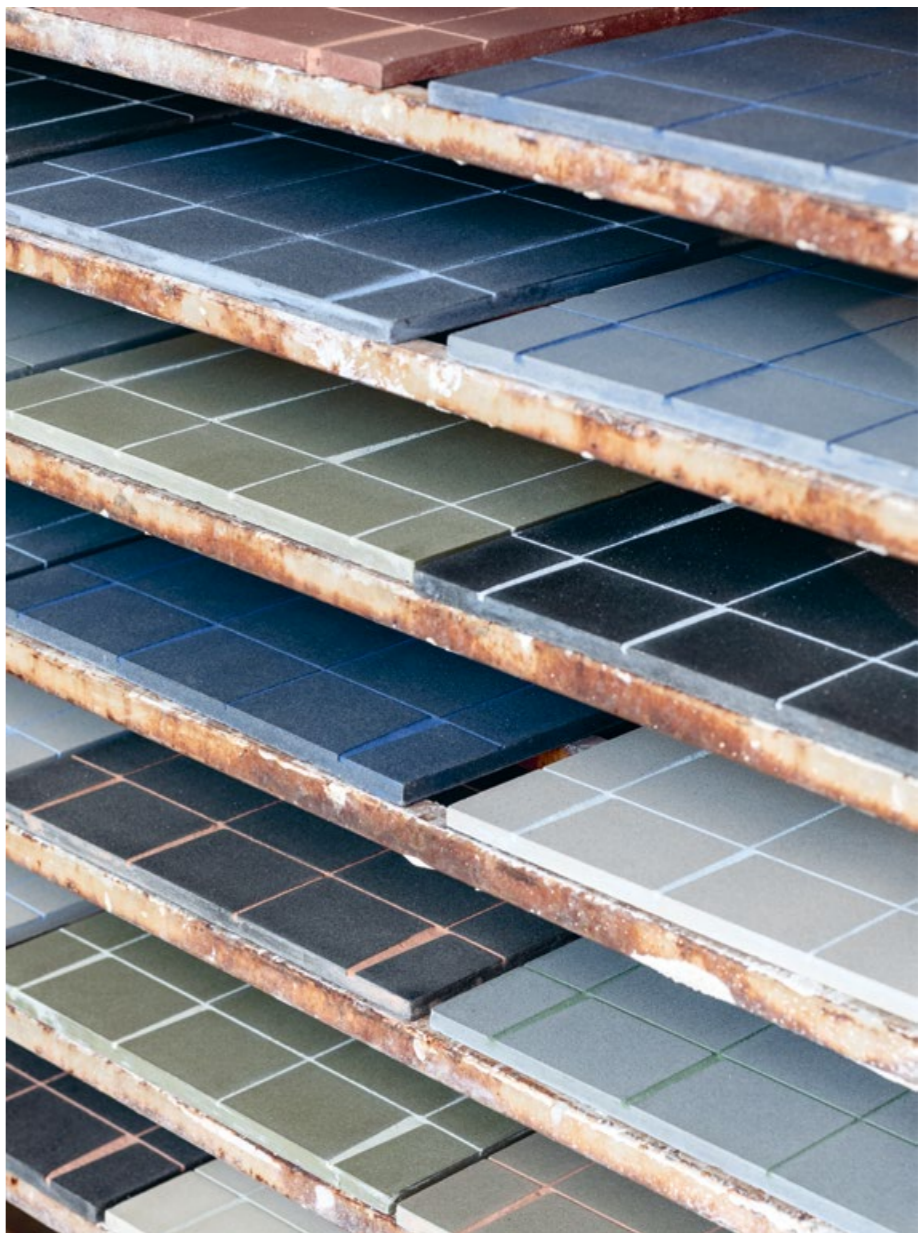




OPEN

Marco Merendi & Diego Vencato

GYPSUM.





OPEN

COLLEZIONE

Open è una collezione di piastrelle in cemento basata sul rapporto armonico tra la geometria delle piastrelle e le dimensioni delle fughe, in un dialogo che prende corpo attraverso un uso attento del colore di cemento e stucchi. Abbiamo lavorato sulle linee di giunzione e le abbiamo inclinate: in questo modo le piastrelle sembrano muoversi, come i mattoni di un vecchio muro, imperfetti e segnati dal trascorrere del tempo.

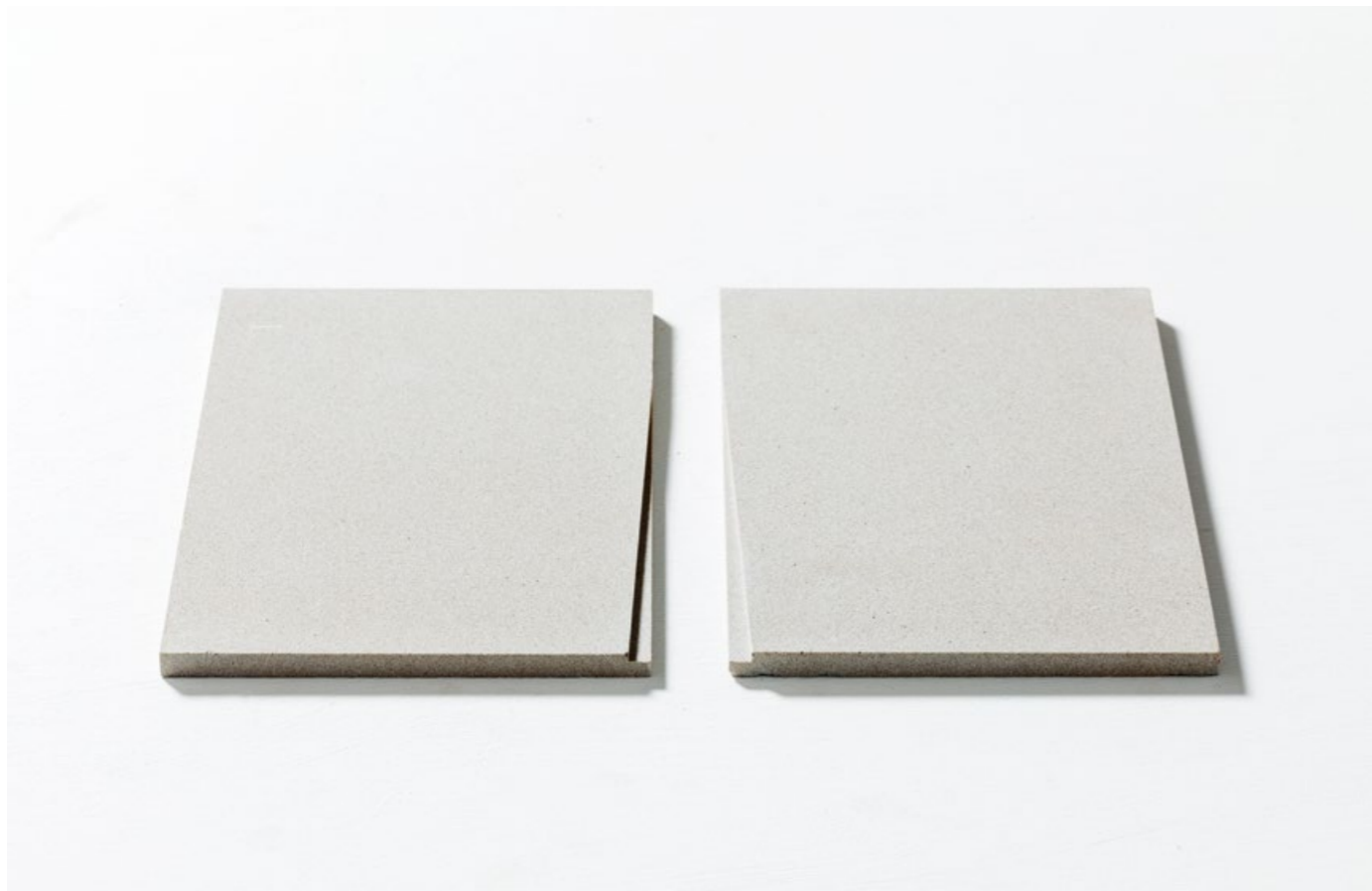
Le fratture triangolari rompono la superficie ed ogni elemento sembra appoggiato ad un altro, in un delicato equilibrio. Open è disponibile in due formati che si adattano a spazi di diversa ampiezza e che possono essere posati uno accanto all'altro, in una proporzione di 1 a 2. La collezione è adatta sia a spazi pubblici sia a spazi privati, in interni ed esterni.

COLLECTION

Open is a concrete tile collection intended to create a harmonious relationship between the geometry of the tiles and the dimensions of the junctions, in a dialogue that is shaped through the careful use of the colour of the concrete and grout. We have worked on the junction lines, tilting them in a way that the tiles seem to move, like the bricks of an old wall, imperfect and marked by the passing of time.

The triangular fractures break the surface and each element seems to lean against one another, in a delicate balance. Open is available in two sizes that adapt to spaces of different dimensions and that can be placed next to each other, in a proportion of 1 to 2. The collection is suitable for both public and private spaces, indoors and outdoors.

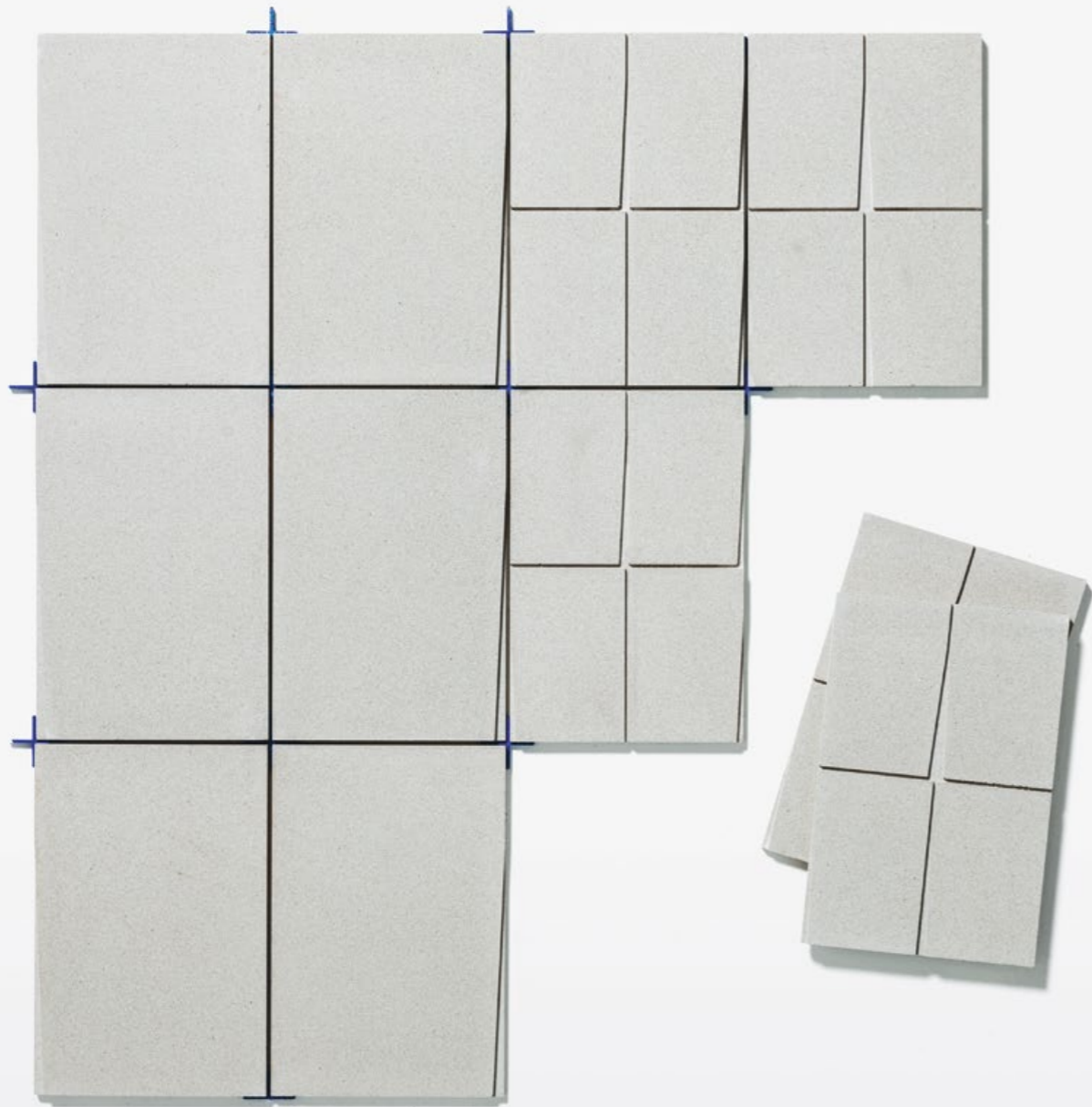
Marco Merendi & Diego Vencato



formati / sizes: large A + large B



formati / sizes: small A + small B



posa e stuccatura / laying and grouting
formato / size: large + small



formato / size: large + small
colore / colour: 430
stucco / grout: kerakoll 49 muschio (epoxy grout)



formato / size: large + small
colore / colour: 430
stucco / grout: kerakoll 49 muschio (epoxy grout)

pagina seguente / next page
formato / size: large
colore / colour: 180
stucco / grout: kerakoll 38 husky (epoxy grout)



EAMES FURNITURE

WA



formato / size: small
colore / colour: 505
stucco / grout: kerakoll 41 eucalipto (epoxy grout)



formato / size: large + small
colore / colour: 480
stucco / grout: kerakoll 47 mediterraneo (epoxy grout)

formato / size: small
colore / colour: 505
stucco / grout: kerakoll 41 eucalipto (epoxy grout)



formato / size: large + small

colore / colour: 480

stucco / grout: kerakoll 47 mediterraneo (epoxy grout)

pagina seguente / next page

formato / size: large

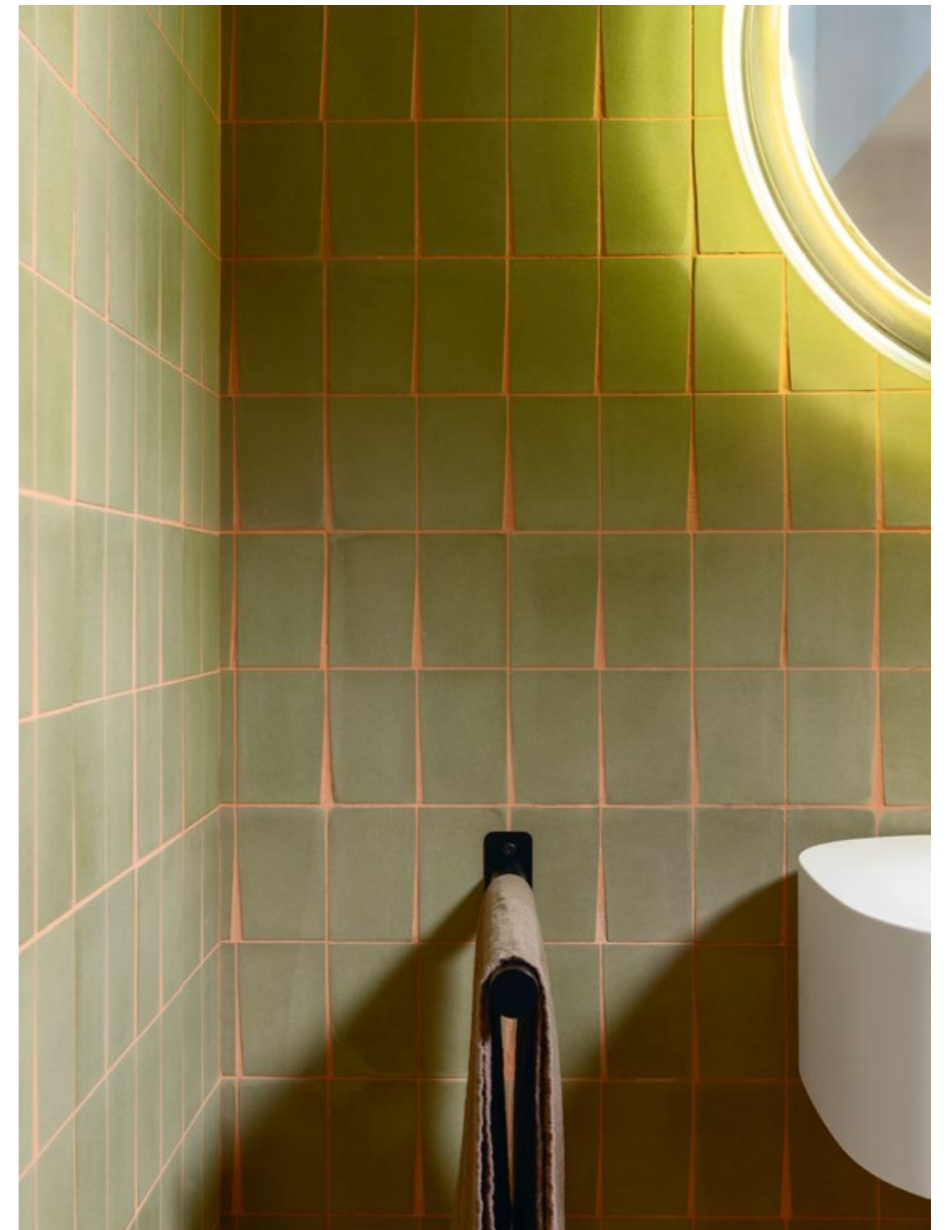
colore / colour: 730

stucco / grout: kerakoll 10 terracotta (epoxy grout)





formato / size: small
colore / colour: 540
stucco / grout: kerakoll 10 terracotta (epoxy grout)



formato / size: small
colore / colour: 540
stucco / grout: kerakoll 10 terracotta (epoxy grout)

MARCO MERENDI & DIEGO VENCATO



Marco Merendi

Si laurea in Architettura presso la facoltà di Architettura di Firenze e collabora con Minardi Formula 1, con il Team Honda Gresini, con lo Studio Cerri & Associati, con lo studio Ivana Porfiri, e con Artemide (responsabile Dipartimento Design). Insegna alla Scuola Politecnica di Design (SPD) di Milano e i suoi lavori sono stati pubblicati in diverse riviste internazionali come Modo, Case da Abitare, Interni, Elle Decor, Casabella. Progetta per aziende come Lavazza, Gruppo Pentole Agnelli, FontanaArte, Viabizzuno, davide groppi, MDF Italia, Terra Moretti – Contadi Castaldi, Danese Milano, Rapsel, Kundalini, made a mano, Agape, iGuzzini, Elmar, Pedrali. Premi: Design Plus 2002 Francoforte; Archiproducts Design Awards 2020; selezione Compasso d'Oro ADI 2013 e 2021.

He graduated from the Faculty of Architecture of Florence and cooperated with Minardi Formula 1, Team Honda Gresini, Studio Cerri & Associati, Ivana Porfiri studio, and Artemide (in charge of Design Department).

He teaches at the Scuola Politecnica di Design (SPD) in Milan and his works have been published in several international magazines such as Modo, Case da Abitare, Interni, Elle Decor, Casabella. He designs for companies like Lavazza, Gruppo Pentole Agnelli, FontanaArte, Viabizzuno, davide groppi, MDF Italia, Terra Moretti – Contadi Castaldi, Danese Milano, Rapsel, Kundalini, made a mano, Agape, iGuzzini, Elmar, Pedrali. Awards: Frankfurt Design Plus 2002; Archiproducts Design Awards 2020; Compasso d'Oro ADI 2013 and 2021 selection.

Diego Vencato

Si laurea al Politecnico di Milano e collabora con Clino Trini Castelli, con Artemide (responsabile dei Progetti Speciali), e con lo studio Parisotto+Formenton Architetti. Nel 2006 apre Diego Vencato Industrial Design.

Progetta per aziende come Horm, r&dlab – Michele Ruffin Creative Group, Eurochocolate, Dainese, MDF Italia, Albeflex, Samsung, Yonder, Pi.Mar, Nodus Rug, Agape, iGuzzini, Elmar, Pedrali.

I suoi lavori sono stati pubblicati sia sul web sia su numerose riviste internazionali tra cui Interni, Abitare, Domus, AD, Elle Decor and Wallpaper*.

Premi: Archiproducts Design Awards 2020; Stylepark Selected Award imm cologne 2020; selezione Compasso d'Oro ADI 2008 e 2021.

He graduated from the Politecnico of Milan and cooperated with Clino Trini Castelli, Artemide (in charge of Special Project Development), and Parisotto+Formenton Architetti studio.

In 2006 he set up Diego Vencato Industrial Design.

He works as a designer for Horm, r&dlab – Michele Ruffin Creative Group, Eurochocolate, Dainese, MDF Italia, Albeflex, Samsung, Yonder, Pi.Mar, Nodus Rug, Agape, iGuzzini, Elmar, Pedrali.

His works have been published both on the web and in several international magazines such as Interni, Abitare, Domus, AD, Elle Decor and Wallpaper*.

Awards: Archiproducts Design Awards 2020; Stylepark Selected Award imm cologne 2020; Compasso d'Oro ADI 2008 and 2021 selection.



ECO-FRIENDLY

Gypsum è attenta all'impatto ambientale della propria attività, e ha sviluppato un ciclo produttivo che utilizza solo materiali a base di acqua e polveri naturali: un processo privo di sostanze inquinanti o dannose per la salute, nel rispetto quindi dell'ambiente, degli operatori coinvolti nelle varie fasi produttive e dell'utente finale.

I polimeri e gli additivi che si immettono nella miscela di Open sono materiali esclusivamente a base di acqua e privi di emissioni.

Tutto il processo produttivo è esente dall'utilizzo di solventi.

Gypsum pays great attention to the environmental impact of its business, and has developed a production chain that doesn't use polluting materials, harmful to the environment, the end user and the people involved in the different stages of the production.

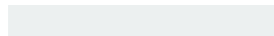
Polymers and additives used for Open mixture are all water-based and emission-free.

The whole production process doesn't involve the use of solvents.

OPEN | colour tones with cement-based grout



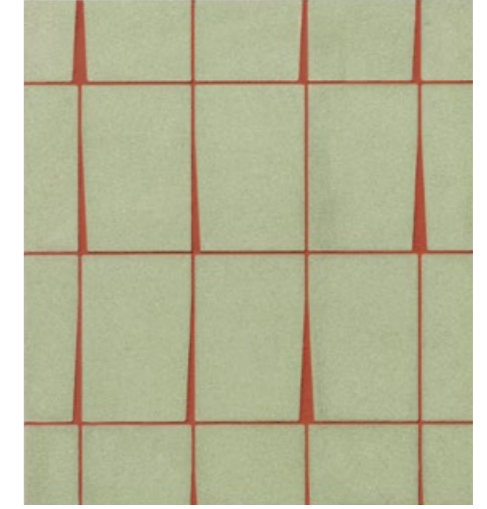
colore / colour: 110
stucco / grout: kerakoll Fugabella Color 04
(cement-based grout)



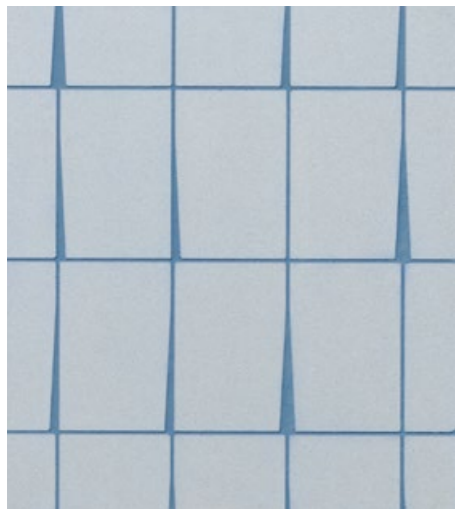
colore / colour: 110
stucco / grout: kerakoll Fugabella Color 13
(cement-based grout)



colore / colour: 540
stucco / grout: kerakoll Fugabella Color 18
(cement-based grout)



colore / colour: 540
stucco / grout: kerakoll Fugabella Color 41
(cement-based grout)



colore / colour: 430
stucco / grout: kerakoll Fugabella Color 15
(cement-based grout)



colore / colour: 430
stucco / grout: kerakoll Fugabella Color 18
(cement-based grout)

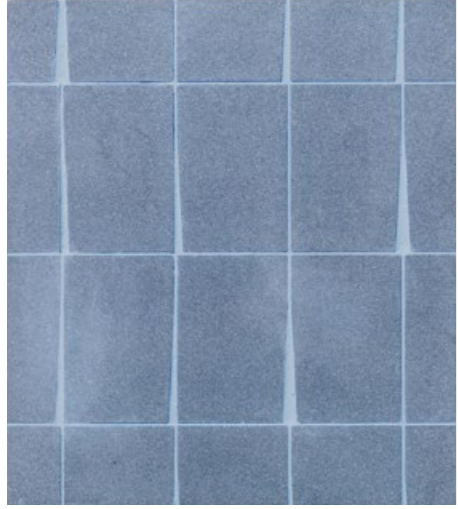


colore / colour: 505
stucco / grout: kerakoll Fugabella Color 18
(cement-based grout)

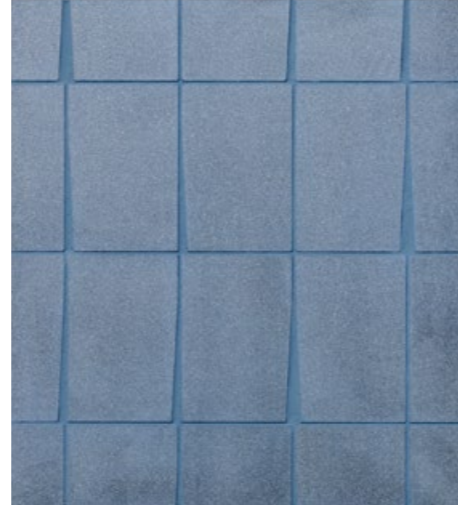


colore / colour: 730
stucco / grout: kerakoll Fugabella Color 27
(cement-based grout)

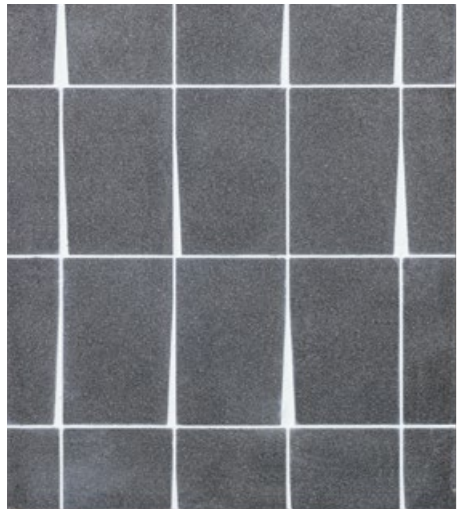




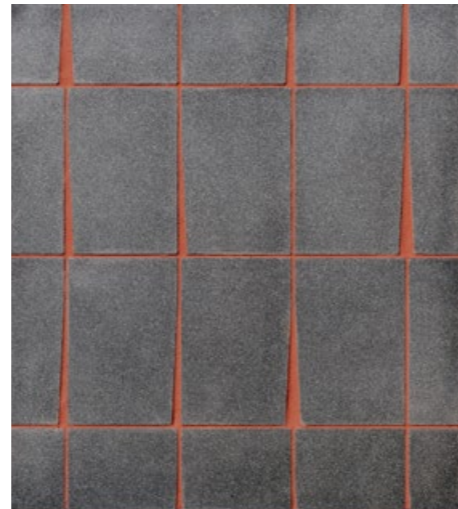
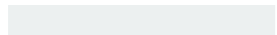
colore / colour: 480
stucco / grout: kerakoll Fugabella Color 13
(cement-based grout)



colore / colour: 480
stucco / grout: kerakoll Fugabella Color 15
(cement-based grout)



colore / colour: 180
stucco / grout: kerakoll Fugabella Color 04
(cement-based grout)



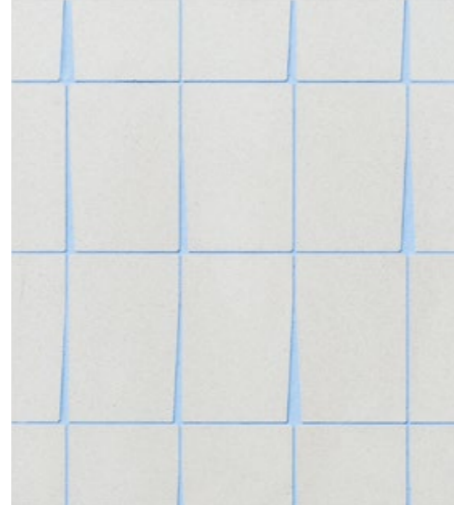
colore / colour: 180
stucco / grout: kerakoll Fugabella Color 41
(cement-based grout)



OPEN | colour tones with epoxy grout



colore / colour: 110
stucco / grout: kerakoll 38 husky
(epoxy grout)



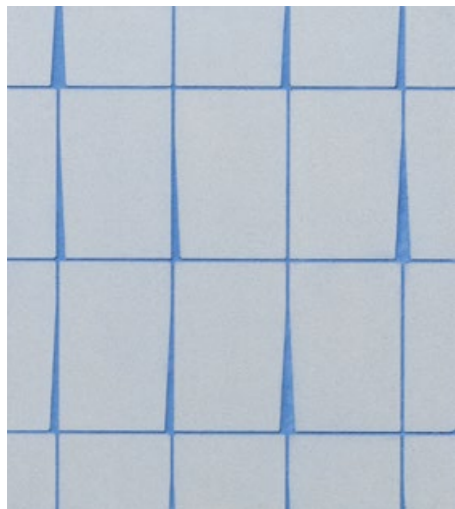
colore / colour: 110
stucco / grout: kerakoll 47 mediterraneo
(epoxy grout)



colore / colour: 540
stucco / grout: kerakoll 41 eucalipto
(epoxy grout)



colore / colour: 540
stucco / grout: kerakoll 10 terracotta
(epoxy grout)



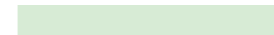
colore / colour: 430
stucco / grout: kerakoll 15 oceano
(epoxy grout)



colore / colour: 430
stucco / grout: kerakoll 49 muschio
(epoxy grout)

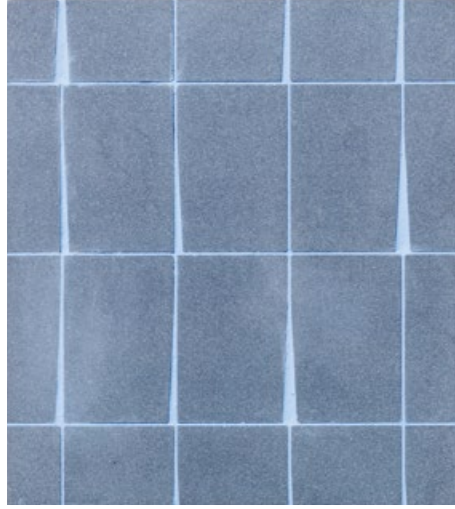


colore / colour: 505
stucco / grout: kerakoll 41 eucalipto
(epoxy grout)

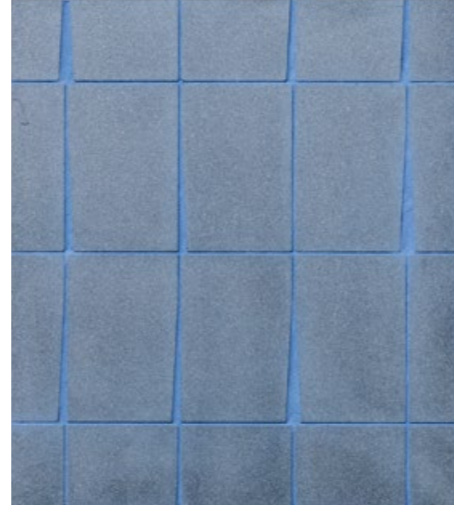


colore / colour: 730
stucco / grout: kerakoll 10 terracotta
(epoxy grout)

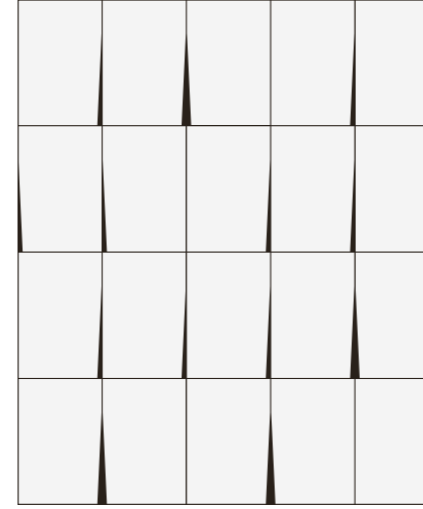




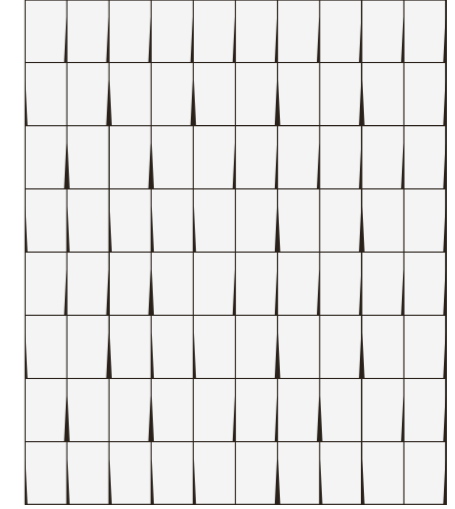
colore / colour: 480
stucco / grout: kerakoll 47 mediterraneo
(epoxy grout)



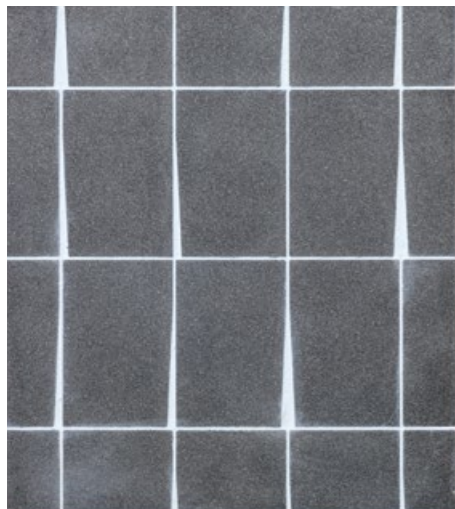
colore / colour: 480
stucco / grout: kerakoll 15 oceano
(epoxy grout)



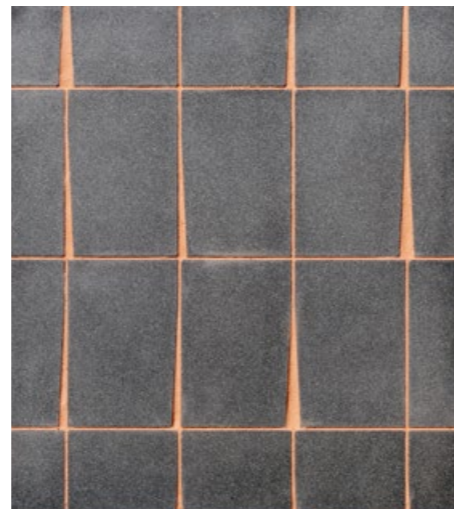
UNIFORME - formato **large** /
REGULAR - size **large**



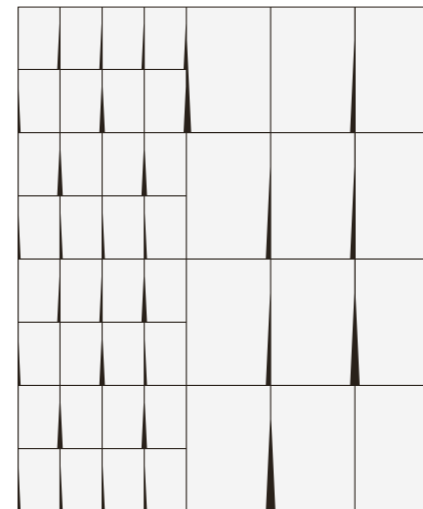
UNIFORME - formato **small** /
REGULAR - size **small**



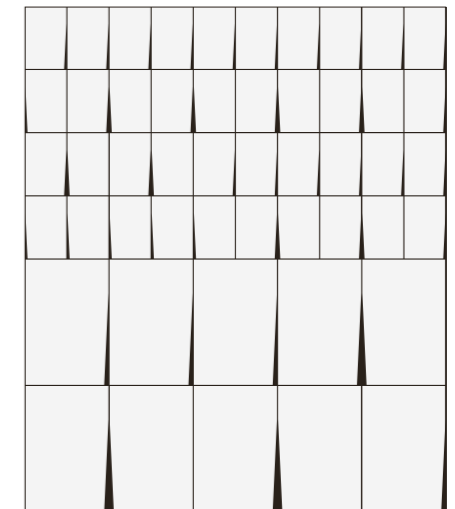
colore / colour: 180
stucco / grout: kerakoll 38 husky
(epoxy grout)



colore / colour: 180
stucco / grout: kerakoll 10 terracotta
(epoxy grout)



MISTO VERTICALE - formati **large + small** /
MIXED VERTICAL - sizes **large + small**



MISTO ORIZZONTALE - formati **large + small** /
MIXED HORIZONTAL - sizes **large + small**

Design Marco Merendi & Diego Vencato 2019

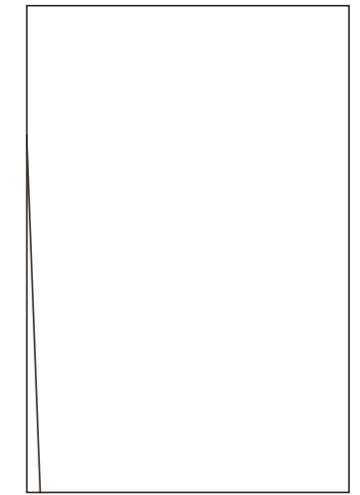
Material Cementoskin® di Gypsum, cemento ad alte prestazioni colorato in massa /
Cementoskin® by Gypsum, high-performance concrete integrally colored

Features Superficie trattata con prodotto impermeabilizzante e antimacchia che mantiene un aspetto naturale e morbido al tatto. Il processo produttivo, interamente artigianale, genera piccole variazioni di dimensione e colore che sono da considerarsi caratteristica integrante e peculiare del prodotto /
A surface treated with waterproofing and stain-resistant products with a finish which feels natural and soft to the touch. The production process, entirely handcrafted, can generate small differences in sizes and colours that are to be considered an integral and peculiar feature of the product

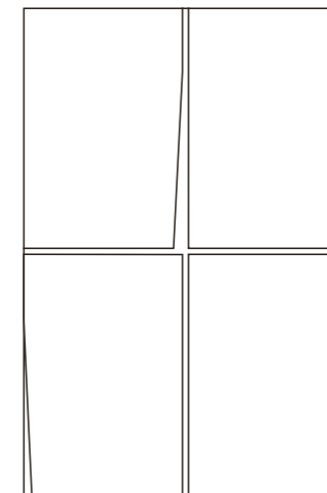
Thickness 11 mm



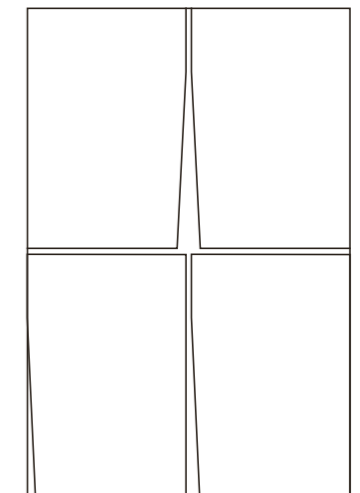
large A
15 × 22,6
5" 29/32 × 8" 57/64



large B



small A
15 × 22,6
5" 29/32 × 8" 57/64



small B

UNI EN 14617-1	massa volumica apparente apparent density	1844 kg/m ³
UNI EN 14617-1	assorbimento d'acqua water absorption	1,03% (dopo 192 h / after 192 hrs)
UNI EN 14617-2	resistenza alla flessione breaking resistance	R _{tf} = 8,64 N/mm ² (spessore / thickness 16 mm)
UNI EN 14617-4	resistenza all'abrasione abrasion resistance	26mm
UNI EN 14617-9	resistenza all'urto impact resistance	W = 1,716 J (spessore / thickness 16 mm)
UNI EN 14617-5	resistenza al gelo e al disgelo freeze and thaw resistance	KM _{t25} = 111 (dopo 25 cicli / after 25 cycles)
UNI EN 14617-6	resistenza agli sbalzi termici thermal shock resistance	Δm% = 0% ΔR _{t,20%} = -7,6% (il segno negativo indica un incremento delle prestazioni / the negative sign indicates an increase in performance)
UNI EN 14231	resistenza allo scivolamento slip resistance	asciutto / dry SRV = 85 bagnato / wet SRV = 55
B.C.R.A.	coefficiente di attrito dinamico dynamic friction coefficient	asciutto / dry μ 0,74 bagnato / wet μ 0,80
DIN 51130	resistenza allo scivolamento slip resistance	9,6° = R9
UNI EN 10545-8	dilatazione termica lineare linear thermal expansion	12,8 [10 ⁻⁶ /°C]
UNI EN 14617-10	resistenza all'attacco chimico chemical resistance	resistente resistant
UNI EN ISO 10545-14	resistenza alle macchie resistance to stains	tutte le macchie / all stains = 5 iodio / iodine = 1
UNI EN ISO 2812-1	resistenza ai liquidi diversi dall'acqua resistance to liquids other than water	resistente resistant
UNI EN ISO 14147	resistenza alla nebbia salina resistance to salt mist	integro (dopo 60 cicli) intact (after 60 cycles)

Collaboratori e crediti /
Contributors and credits

Editore / Editor
Direzione artistica / Art direction
Progetto grafico / Graphic project
Fotografia / Photography
Traduzione / Translation
Ringraziamenti / Thanks
Stampa / Printing

Gypsum
Marco Merendi & Diego Vencato
Marco Merendi & Diego Vencato
Claudio Tajoli
Chiara Laverone
Agape, Agapecasa, Flos, Fritz Hansen, Paola Lenti
Tipitalia srl, Piacenza

© 2022 Gypsum
Tutti i diritti riservati / All rights reserved

Made in Italy

GYP SUM srl
Via C. A. Dalla Chiesa, s.n.
24048 Treviolo BG
Italia
T +39 035 200085
gypsum-arte.com